



For Fluid Process Heating, The Choice is Clear. Hydro-Thermal Delivers the **LOWEST** Total Cost of Ownership

Best-in-Class Durability

Hydro-Thermal Direct Steam Injection (DSI) heaters are designed to last 30+ years, and are backed by a 100% performance guarantee. Consider the long-term impact of your capital purchase.

Lower Operation Cost

Hydro-Thermal heaters are essentially 100% efficient, delivering up to 25% energy savings, achieving rapid ROI. They are easy to install, have a compact footprint and are simple to operate.

Optimized Production

The Perfect Temperature, Every Time. Hydro-Thermal heaters provide instantaneous response and can maintain $\pm 1^\circ$ F precision, enabling consistent process temperatures & production capabilities.

Minimal Maintenance

Hydro-Thermal's robust design and product quality provides reliable performance. Our heaters typically only require (minimal) preventative maintenance, as they are designed to eliminate hammering, vibration, scaling, and fouling.

Less Downtime

Hydro-Thermal heaters have developed a strong reputation for best-in-class reliability and minimal unplanned maintenance



25%

ENERGY SAVINGS VS.
HEAT EXCHANGERS

$\pm 1^\circ$ F

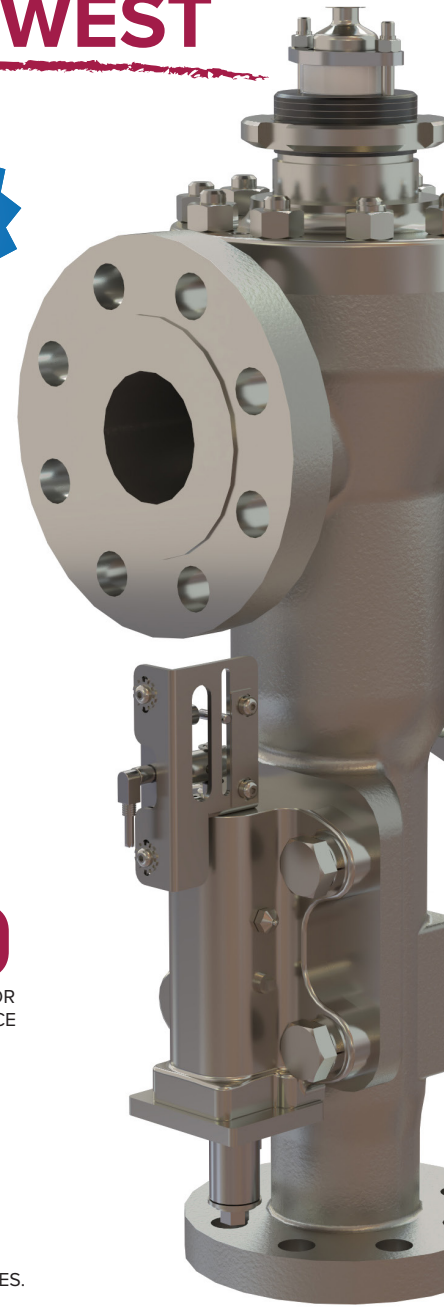
PRECISE TEMPERATURE
CONTROL

ZERO

NEED FOR ACID BATHS OR
REPETITIVE MAINTENANCE

NO

DISRUPTION TO
PRODUCTION SCHEDULES.



Hydro-Thermal Hydroheater

"We are heating the water hotter than we did with the sparger, but we are using less steam and less makeup water"
- Doug Friedrich, Operations Manager at Badger State Ethanol

"The standard for reliability is how long can equipment be used with scheduled maintenance with no unplanned downtime. This equipment will operate for months and months with no downtime with a variety of skill level operators"
- Mike Tate, Maintenance Manager at Blue Bell Creameries

"I think the most meaningful benefit is the increase in productivity it provides. You can cook more food with less equipment, time, maintenance and floor space."
- Bryn Craggs, Food Production Consultant, Beech Royd Consultancy